

LEM | S83

Shin & Tomoko Azumi | 2000



LEM

Shin & Tomoko Azumi | 2000

In 1969, man landed on the moon aboard the LEM, Lunar Excursion Module. In 2000, at the turn of the millennium, the LEM stool was born, one of the symbols of Lapalma's style. The same lightness, the same absence of gravity that in the void created by the design stimulates the relationship with the environment. And just as Apollo 11 could not bear unnecessary weight, so this extraordinary seat has enclosed every function in a minimal and elegant profile. Only the essentials, the rest remained on Earth. Available in height-adjustable, self-aligning and fixed stool versions, indoor and outdoor, it is now produced as a capsule collection in three new galvanic finishes, in brushed black, blue and green, which add to the already wide range of available options. Ideal both for life around the kitchen and for reception areas, bars and restaurants.

Product selected for the Quick Ship program, [download the PDF](#)



LEM

Shin & Tomoko Azumi | 2000

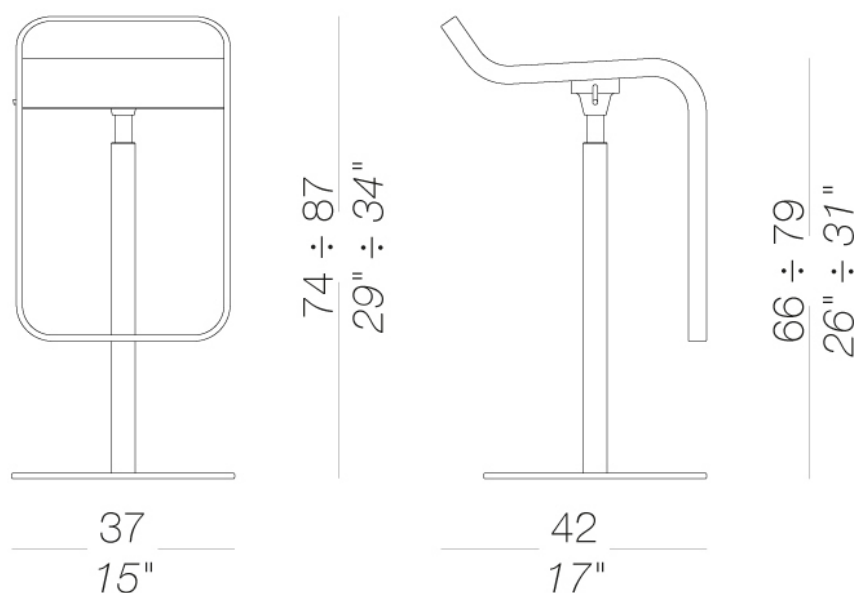


| S83 Stool H66÷79 self-returning seat mat chromed gas lift

Stool with swivel seat and adjustable height with self-returning mechanism to the original height and to the front position. Metal frame mat chromed and base covered by a stainless steel sheet Aisi304 "linen fabric" pattern or entirely powder coated. Mat chromed piston. Seat in plywood in several finishes. Felt under the base. Also available small base Ø 20 cm. for floor fixing.

TEST DIN 68 877/81 5.6

TEST 1 IM - Valencia



LEM | S83

Shin & Tomoko Azumi | 2000

frame



metal
Brushed galvanic
black
0 Colors



metal
Green galvanic
0 Colors



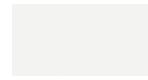
metal
Galvanic blu
0 Colors



powder coating
pistacchio
1 Colors



powder coating
black
1 Colors



powder coating
white
1 Colors



powder coating
perla | outdoor
1 Colors



powder coating
celeste | outdoor
1 Colors



powder coating
mattone | outdoor
1 Colors



powder coating
oliva
1 Colors



powder coating
tortora | outdoor
1 Colors

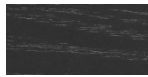


metal
mat chromed
1 Colors

seat



wood
blanch oak
1 Colors



wood
black open pore
1 Colors



wood
oak dark walnut
1 Colors



lacquered
lacquered
8 Colors



laminate
fenix 9/10
2 Colors



metal
stainless steel
1 Colors



fabric
Hallingdal 65 - Grade
C
58 Colors



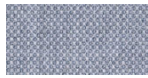
fabric
Canvas 2 - Grade C
45 Colors



fabric
Steelcut Trio 3 -
Grade D
54 Colors



fabric
Remix 3 - Grade C
72 Colors



fabric
Fiord 2 - Grade C
39 Colors



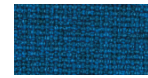
fabric
Divina MD - Grade D
27 Colors



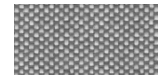
fabric
Divina Melange 3 -
Grade D
38 Colors



fabric
Tonica 2 - Grade C
39 Colors



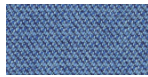
fabric
Medley - Grade A
37 Colors



fabric
Maya - Grade A
43 Colors



fabric
Jet - Grade A
66 Colors



fabric
Capture - Grade B
60 Colors



fabric
Crisp - Grade B
40 Colors



fabric
Iliris - Grade B
34 Colors



fabric
Steelcut 3 - Grade D
40 Colors



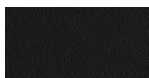
ecoleather
Valencia - Grade B
72 Colors



leather
leather
7 Colors



plastics
grey polyurethane
1 Colors



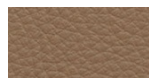
plastics
black polyurethane
1 Colors



fabric
Grain - Grade. B
50 Colors



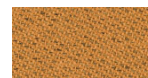
fabric
Re-wool - Grade C
24 Colors



soft-leather
Soft-leather
17 Colors



fabric
Main Line Flax -
Grade. B
57 Colors



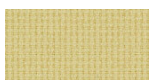
fabric
Chili - Grade. A
47 Colors



fabric
Blazer - Grade. C
77 Colors



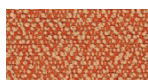
fabric
Umber - Grade. B
36 Colors



fabric
Nobel - Grade. C
30 Colors



fabric
Naveli - Grade. C
24 Colors



fabric
Fiocco - Grade. B
34 Colors



fabric
Atrium - Grade. C
16 Colors



fabric
Panama - Grade. A
48 Colors



fabric
Sorrento - Grade. B
22 Colors

LEM | S83

Shin & Tomoko Azumi | 2000

consult the portfolio for the range of colors, fabrics, eco-leather, soft-leather.

use and maintenance instructions

Clean all parts in wood, leather, fabric and metal with a damp cloth or a diluted neutral cleaner. Do not use cleaners with alcohol, bleach, solvent or abrasive products. Any liquid spilt on the product must be wiped up immediately. When lifting or moving the product, hold it on the structure and not under the seat. The product should not be subjected to unbalanced weights, as it is designed for a proper rest on the foothold (on four legs or on the base). Our company relieves from any responsibility in case of damage caused to fragile floors. Avoid any improper use of the product: do not step on the product, on the footrest or on the armrests. Avoid any movements that could compromise the proper functionality of the product or the safety of the users. Wood and leather, being natural materials, could be easily damaged. Small impurities or imperfections are within quality standard range. Do not expose the product to weather conditions or atmospheric agents, nor to heat sources over 40°C. Also products for outdoor use could be afflicted by atmospheric agents. The product could undergo possible exterior changes due to particular exposure to heat, humidity and saltiness. An appropriate and frequent maintenance and cleaning of the product enhances its durability. The product could change colour and shade, if exposed to direct sunlight. Maintenance has to be carried out by experienced staff. Dispose of the package only after assembling the product, in order to avoid the loss of ironmongery and components. Once the product has been dismantled, the product itself or its components must be given to the public garbage disposal system, according to the legislation in force.